

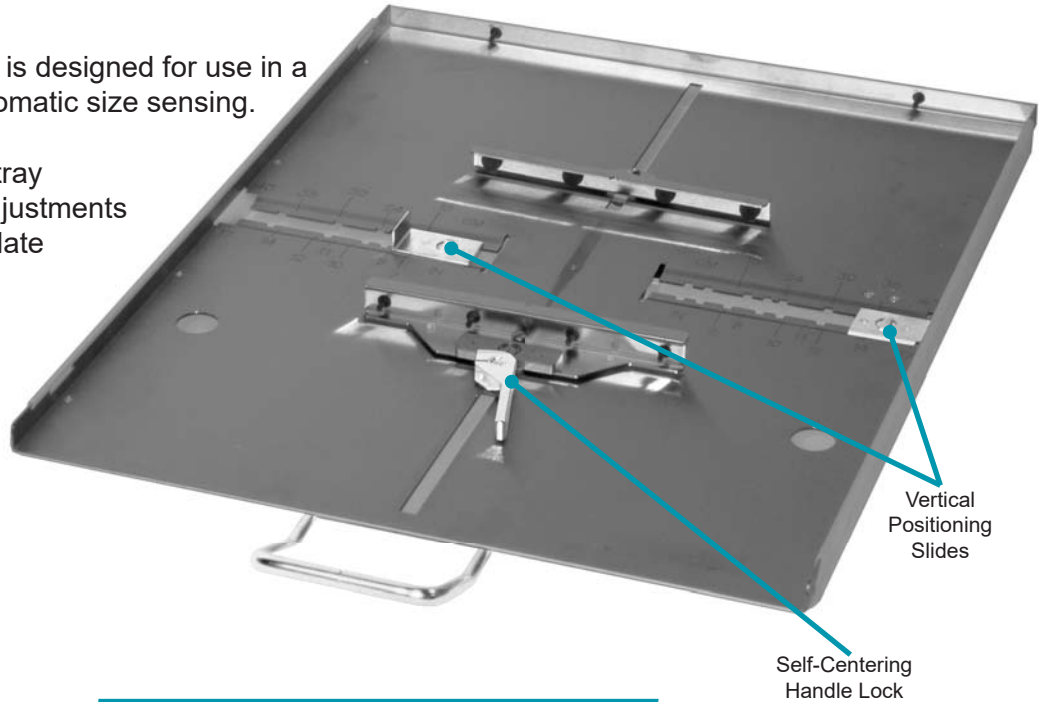
# CASSETTE TRAY

DESIGNED FOR USE IN RADIOGRAPHIC TABLES AND WALL STANDS

The QUEST Cassette Tray (Q-1717CT) is designed for use in a Grid Cabinet or Bucky not requiring automatic size sensing.

The high quality design of the cassette tray eliminates the need for field / service adjustments over time and is designed to accommodate standard receptors ranging from 7" – 17" (18cm – 43cm).

It is designed to fit into the QUEST Grid Cabinet (Q-1717GC), along with most standard style grid cabinets and Bucky's. (ie: Midwest, LF, and Progeny)



**FITS ALL TYPES OF PANELS  
DR & CR - UP TO 17" x 17"**



Shown with 17x17 Cassette



Shown with QUEST Grid Cabinet (Q-1717GC) & CR Cassette

## KEY FEATURES

**CAT# Q-1717CT**

### CASSETTE TRAY

- For use in a Grid Cabinet or Bucky
- Accepts standard cassettes ranging from 7" – 17" (18cm – 43cm)
- Self-Centering cassette ability with easy handle lock
- Vertical Positioning Slides for centering when used in wallstand
- Eliminates the need for field / service adjustments over time
- For Radiographic Tables and Wall Stands

*\*Specifications are subject to change*



**PROVIDES ACCURATE POSITIONING FOR  
PORTRAIT & LANDSCAPE ALIGNMENT**

[WWW.QUESTXRAY.COM](http://WWW.QUESTXRAY.COM)

